



1530 W 280TH ST
NEW PRAGUE, MN 56071
952-758-2108

Special points of interest:

- KA Witt newsletter is available quarterly to clients, business partners, and anyone who maybe interested in learning more about our company
- Informational articles related to building & remodeling
- Available inventory
- Employee spotlight and upcoming events.

Inside this issue:

Understanding Energy Ratings on windows & Doors 1

Model Homes

Top Trends in 2019 2

Hockey Fans for Life!
Feng Shui Front Door

Employee Spotlight
Upcoming Events 3

Company History 4

Did you Know

K.A. Witt News

Volume 1, Issue 1

January 2019

Understanding Energy Ratings

The Energy Star label is good, but the National Fenestration rating Council (NFRC) label tells you even more. With the high cost of replacement windows and doors, it's wiser to know exactly what you're getting for your money. Here's what all those scientific terms and numbers about energy savings mean:

1. U-FACTOR

Range: 0.20 to 1.20 The lower the number, the better an insulator the window or door is. Northern climates recommend rating of 0.35 or less.

2. Solar Heat Gain Coefficient (SHGC).

Range: 0 to 1 The lower the number, the less solar radiation and heat the window or door allows inside. Northern climates should look for up to 0.55 rating.

3. Visible Transmittance (VT)

Range: 0 to 1 The lower number means the room will be dimmer; higher means brighter. Consult VT numbers if you're looking to reduce glare in a room or fill it with natural light, but keep in mind that very low VT may mean you have to use artificial lighting even during the day.

4. Air Leakage

Range: N/A, but .03 is standard building code. The lower the number, the more airtight the window or door

5. Condensation Resistance

Range: 1 to 100 The lower the number, the more condensation the window or door allows to build up. Energy Star-rated windows tend to resist condensation well.



Understanding Energy Ratings for Windows and Doors.

Model Homes Available

KA Witt Construction has an inventory of model homes in New Prague that are move in ready and can close within 30 days.

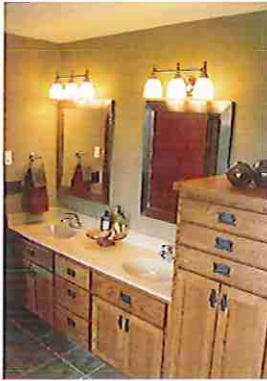
- Sherwood Model 2-Story Heritage Estates 705 11th St NE, \$389,900
- Denver Model 2-Story Heritage Estate 609 11th St NE \$379,900

- Denver Model 2-Story in Eastland 601 Eastland Ave SE. \$413,900
- Savannah Model-Rambler in Eastland 700 Eastland Ave SE. \$489,900
- Townhome 503 Autumn Ave SE. \$352,900
- We also have an under construction townhome in The Reserves of Eastland

Phase 2 (behind Coborn's)

- 1605 3rd St SE. \$338,900

Contact KA Witt Construction for more information or to schedule a showing



Kitchen and Bath enhancements lead the way in home building trends in 2019

The Top Residential Home Building Trends in 2019

Kitchen and bath enhancements lead the list of trends according to the American Institute for Architects (AIA). There is still a continuing demand for new kitchen and bathroom products and features that make remodeling these spaces highly desired.

Along with these renovations, home additions and Multi-Generational living spaces are also becoming popular. This trend is

fueled by the need for extra living space and also extended families living under one roof. AIA has noticed that customers building new homes, are asking for "In-law suites" or master bedroom suites on both the main and 2nd floor of homes. There is more requests to provide private entrances and garage access. Mud Rooms and Flex Rooms are gaining in popularity replacing the front

entry closet and providing more storage solutions. Features like cubbies, storage benches and hooks keep the mess out of view and makes the house cleaner. Flex rooms are often rooms designed off the front hallway that can be used as an office, spare bedroom or conversational area. They are usually kept open with optional pocket or French doors if desired.

First time at a Wild hockey game and Katie & Janiel are fans for life!

Hockey Fans for Life!!

Katie Capaul from New Prague and Janiel Liebl formerly from Dawson, MN became hockey fans for life after attending their first ever hockey game! Katie is our Accounting Manager and Janiel is our AR/AP specialist for all the Witt Companies. After a crash course in hockey from former coaches Chris & Jason Witt, these two bravely entered the "X" with all the confidence and wisdom of a seasoned hockey fan. The "old

school" NorthStar and Boogaard jerseys were the finishing touch to make their hockey experience a success. They even came home with a certificate and hockey puck to remember their first game. Nice job ladies!



Feng Shui Front Door Colors.



The color you choose for your front door can determine the kind type of energy your home gives off.

In simple terms, a good feng shui door is a door that has all the practical things taken care of, such as its cleanliness and look. Orange colored front door has vibrant energy. Magenta or Hot Pink front door colors provides a feeling of intense joy. Yellow is sunny, bright and happiness overflowing and a red front door gives humble and graceful energy.

Color is also the easiest way to quickly create a very different quality of feng shui energy in any space. We all know that a fresh coat of paint can make the room feel happier, brighter and just so much more enjoyable to be in. Your front door welcomes visitors to your home, so the perfect color energy will set the tone for the entire home

While choosing color is certainly a personal choice based on your likes and dislikes, home decor style, etc.; it's highly encourage for you to look into best color choices based on the feng shui energy of your home.

Employee Spotlight

Marty Sticha

Marty is our Excavation Foreman for the dirt crew and this coming March will be his 22nd year with our company. Before working at KA Witt, he was a framer for Joe Vandeenboom Homes. If you ask him what he does, he'll tell you "everything" with a big laugh and smile.

Marty grew up in New Prague and graduated NPHS in

1996. He has 2 brothers & 2 sisters and is the 2nd youngest in his family.

Marty and his wife, Melissa, have been married for 13 years and have 2 boys (Paxton 5 & Mason 1).

A few fun facts about this fabulous guy is his favorite food is Pork & Dumplings. His favorite sport is college football-Gophers and he enjoys softball & golf. He says the best part of work-

ing at KA Witt Construction are the guys he works with....awwww. That's so nice!

Something you might not know about him is that he likes watching Disney movies. He watched Disney movies even before he had kids! What a guy!



Marty Sticha
Excavation Foreman

It's not all work and dirt for the Witt Crew.....

At the end of November, KA Witt Construction hosted an employee pheasant hunt at Traxler's Hunting Preserve in Le Center, MN. A wild game burger buffet was served followed by the hunt. Looks like a great time! Jake Witt, Marty Sticha, Scott Pexa & Hunter Witt. Upper Picture-Chris Witt, Scott Krenik, Corey Eidem & David Hansen. Lower Picture-Katie Capaul, Jason Witt, Luke Witt & Cody Sirek



Upcoming Events

I know it seems crazy to be thinking about the Spring Parade of Homes this early, but it's just around the corner. The 2019 Spring Parade of Homes is scheduled to begin Saturday March 2nd and will run through Sunday March 31st. Stay tuned for more information .

KA Witt Construction is Sponsoring New Prague Chamber Bingo March 28th at the New Prague Golf Club. The theme that night will be Tailgate Party. It should be a fun night since it's the last night for Chamber bingo for the season. There will be some great prizes that night along with friendly neighbor winnings.



Starts March 2nd-31st
Thursday-Sunday
From 12-6



1530 W 280th Street
New Prague, MN 56071

Phone: 952-758-2108
Fax: 952-758-5159
Email: info@kawitt.com

We're on the web at
www.kawitt.com

Like us on Facebook and
Instagram



K.A. Witt Construction—A Family Tradition

Quality and Craftsmanship since 1934

Whether you're building a home, remodeling your current home, or restoring a beauty to a heritage home, you can trust K.A. Witt. We've built quality, affordability and value into every project since 1934.



Did you know.....

KA Witt Construction is known as a quality custom home builder, but did you know we do more than just build beautiful homes. Here's a list of what else we can do.

- Septic inspection, design & installation
- Excavation services
- Pool installation
- Fence installation
- Light commercial building
- Remodeling, additions, porches & decks
- Street & Road Projects
- Site Development
- Sport Courts-Tennis, softball, etc.
- Parks & recreational areas
- Utilities
- Concrete- stained & stamped.
- Patios & Driveways
- Garages floors & Basements
- Demos

